

INVITATION HALLAND'S 3-DAYS 2012 13TH-15TH JULY 2012

3-day orienteering event with slightly shortened course distances. Day 3 is a pursuit race.

PROGRAMME

Thursday 12th July - The 3-day camping at Vassbäck opens.

Friday 13th July - Stage 1. Arena Håfors, Middle distance. First regular start 16:00.

Saturday 14th July - Stage 2. Arena Buared, Long distance. First regular start 10:00.

Sunday 15th July - Stage 3. Arena Buared, Long distance, pursuit race. First start 10:00. Prizegiving: Arena Buared.

Monday 16th July - The 3-day camping at Vassbäck closes.

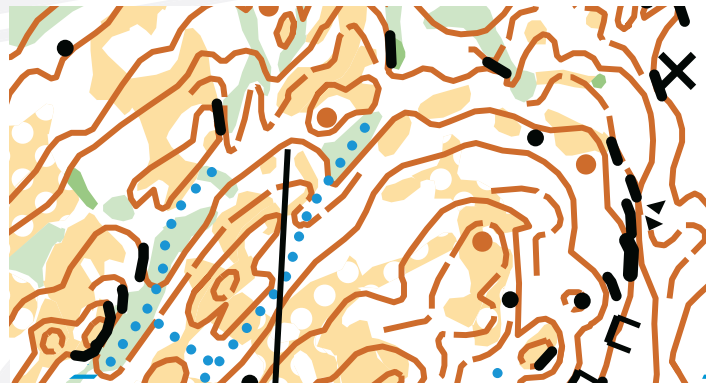
THE ARENAS

Arena Håfors – Stage 1

This is where the middle distance stage will be decided. The Sjögärdet Map is situated in the southeastern part of Kungs- backa, near the village Håfors. In this area you will find old fir forest with sparse undergrowth, pine forest with blueberry vegetation which is not very hindering for running. There are quite a few areas with flat rocks and a few clear cuttings and slow run areas.

Arena Buared – Stage 2 and 3

The two last stages are decided on a entirely new map in the Ölmevalla hills a few kilometres to the east of the seaside resort Åsa. From the camping at Vassbäck you can go here by bike. In Ölmevalla an area with farm- and meadowland, residential buildings and some roads and paths will be used for the shorter courses. The longer courses will be a wonderful experience since the main part of the map consists of a wilderness. This area has some major hills with interesting hillsides.



STAGE INFORMATION

Stage 1

Map: Sjögärde-Håralt (1989), updated spring 2012 by Carlsson&Svanberg.

Last competition - Snötrampen 2009.

Scale 1:10.000 for all classes except for DH75-DH95 that use scale 1:7 500. Contours 5 meters.

Offset printed map for scale 1:10.000, certified printing for scale 1:7.500.

Stage 2 and 3

Map: Ölmevalla. New map since 2011 and updated 2012 by Carlsson&Svanberg. No orienteering in this area since 1970.

Scale 1:10.000 for all classes except for DH75-DH95 that use scale 1:7 500.

Contours 5 meters.

Offset printed map for scale 1:10.000, certified printing for scale 1:7.500.

A package with maps from old maps over the areas for Hallands 3-dagars and O-Ringen can be ordered from oringen.se for 120 SEK.

Distance to start:

Stage 1: 1500-2000 meters

Stage 2: 1500-2000 meters

Stage 3: 1000-1500 meters

Parking:

Stage 1: Cars, 100-500 meters from the arena.

Busses and wagons about 2500 meters

No camping is allowed on the parking.

Stage 2&3: Cars, distance 500-1000 m to the arena.

Busses and wagons about 2500 meters

No camping is allowed on the parking.

It's possible to bike from the camping to the arena for stage 2&3.

Event Sponsort Hallands 3-dagars:



COURSE LENGTHS 3-dagars 2012

The course lengths given are for middle and long distance.

MAIN CLASSES

D10	1,8	2,1	H10	1,8	2,1
D12	2,3	2,6	H12	2,3	2,6
D12 Kort	1,8	2,3	H12 Kort	1,8	2,1
D14	2,7	3,4	H14	2,7	3,4
D14 Kort	2,3	2,6	H14 Kort	2,3	2,6
D16	3,2	3,8	H16	3,2	4,7
D16 Kort	2,7	3,0	H16 Kort	2,7	3,4
D17-20 K	3,2	3,8	H17-20 K	3,2	4,7
D18 Elit	3,2	4,8	H18 Elit	3,2	6,0
D18	3,2	4,3	H18	3,2	5,5
D20 Elit	3,2	5,6	H20 Elit	3,6	8,0
D20	3,2	4,7	H20	3,2	6,4
D21 Elit	3,6	8,0	H21 Elit	4,0	11,2
D21	3,2	6,0	H21	4,1	8,5
D21 Kort	3,2	4,0	H21 Kort	4,1	6,4
D35	3,2	4,8	H35	4,1	6,4
D40	3,2	4,0	H40	3,6	6,0
D45	2,7	3,6	H45	3,6	5,2
D50	2,7	3,2	H50	3,2	4,8
D55	2,7	3,2	H55	3,2	4,4
D60	2,3	2,8	H60	3,2	4,0
D65	2,3	2,8	H65	2,7	3,6
D70	2,3	2,7	H70	2,7	3,6
D75	1,8	2,7	H75	2,7	3,2
D80	1,8	2,3	H80	2,3	2,7
D85	1,8	2,3	H85	2,3	2,7

RECREATIONAL CLASSES

D21 M	3,0	4,0	H21 M	3,2	6,4
D35 M	2,7	3,2	H35 M	3,2	5,2
D40 M	2,7	3,2	H40 M	3,2	5,2
D45 M	2,3	2,8	H45 M	2,5	4,4
D50 M	2,3	2,8	H50 M	2,5	4,4
D55 M	2,2	2,4	H55 M	2,5	3,6
D60 M	2,2	2,4	H60 M	2,5	3,6

YOUTH SHORT CLASSES

Inskolning	1,5	1,5
U1	1,8	1,8
U2	2,3	2,3

OPEN CLASSES

Open 1	2,5	2,5
Open 2	4,0	4,0
Open 3	3,0	3,0
Open 4	5,0	5,0
Open 5	3,5	3,5
Open 6	5,5	5,5
Open 7	3,0	3,0
Open 8	4,5	4,5
Open 9	6,5	6,5
Open 10	4,0	4,0
Open 11	5,5	5,5

STRING COURSE

String course for the youngest orienteers is organised every day at the arena.

For more information please visit hallands3dagars.se

ENTRY AND FEES

Entries and ordering of services are made through the Eventor web site, eventor.orientering.se

	Early entry	Ordinary entry	Late entry	Last minute
	01-nov	15-may	29-june	12-july
Yputh	165 SEK	180 SEK	195 SEK	270 SEK
Adults	270 SEK	300 SEK	330 SEK	450 SEK
Elite	390 SEK	435 SEK	480 SEK	680 SEK

Open recreational classes

Youth	165 SEK	180 SEK	195 SEK	65SEK (per stage)
Adults	270 SEK	300 SEK	330 SEK	110SEK (per stage)

Camping (thursday-monday)

	375 SEK	375 SEK	400 SEK	450 SEK
--	---------	---------	---------	---------

Terms of entry

Same as for O-Ringen. Please read more at oringen.se, under ENTRY.

Punching system:

SportIdent. Rental card is automatically given if you don't specify your SI-card number at your entry. Card rental 30 SEK/day. Lost SI-card (rental) 600 SEK.

CAMPING AND ACCOMODATIONS

Camping - Vassbäck

The Halland 3-days camping is located in the southern parts of the village Åsa, and the south western part of Kungsbacka municipality. Here, a number of bathing areas are available at short biking distance from the camping. Stores and restaurants can be found in the centre of Åsa. The camping is situated on a spacious turf area.

Camping before O-Ringen

Immediately after Halland's 3-days, you can take your caravan or tent and head for Ringenäs firing range, just north of Halmstad. Here, free camping is available at the functionaries' camping for the nights until the regular O-ringen camping opens on Wednesday. At Ringenäs, two large beaches are available within walking distance. This offer applies if you have booked camping both for Halland's 3-days and for O-Ringen.

Övrigt boende

There are several holiday villages, hostels, spas, hotels and other accommodations available in Varberg and Kungsbacka municipalities. Please refer to the tourist agencies of the respective municipality, see www.marknadvarberg.se/besokare and www.vastsverige.com/kungsbacka.

3-days 2012

Event sponsor Hallands 3-days:



SERVICE & OTHER

Transport to the stages

Transports to the arenas is done with private car or bike according to the organizer's instructions. For more information visit www.hallands3dagars.se

Parking

Parking in connection to the arenas is available for a fee. On stage 2 and 3 those staying at the camping are advised to bike to Arena Buared. Wild camping at the arenas is not allowed.

Service at the arenas

The arenas have well supplied canteens, hot showers, child care. Sports sales.

Child care

Child care is provided at all three stages. Children of ages 3-8 years are accepted and should be diaper free. Child care must be booked at the latest in connection with late entry on 15th June.

CONTACTS

Linnéa Carling, Arena manager, +46 733 10 06 24,
Bengt Hansson, Competition manager +46705301502
Erik Toftered, Camping manager, +46 702 09 60 18

More information can be found at
hallands3dagars.se

Welcome!

